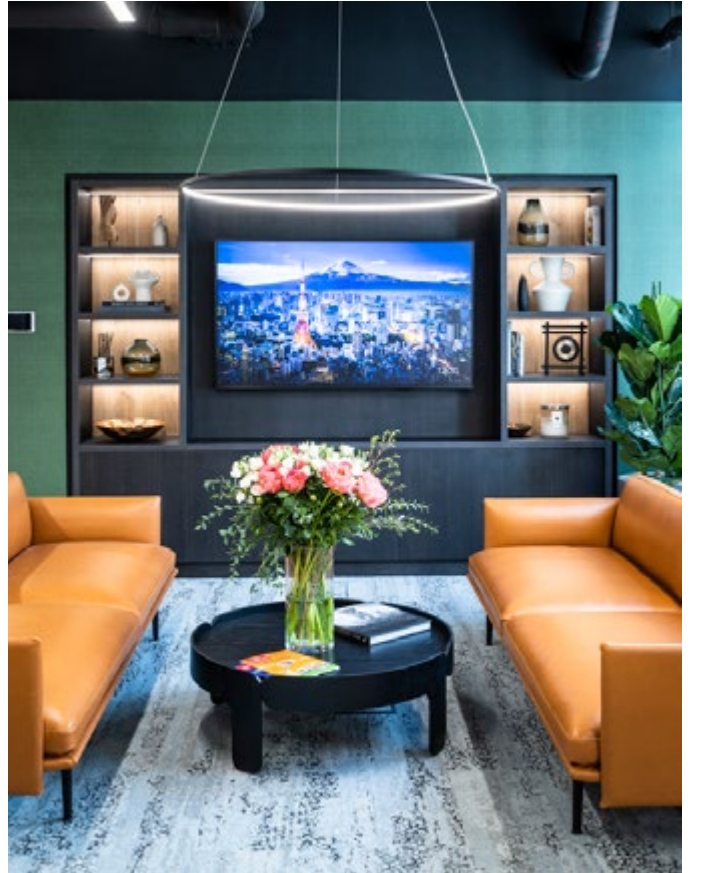


# 50 Office Design Ideas





# About K2 Space

K2 Space is a leading office design and build company in London and one of the UK's independent specialists in office furniture and FF&E procurement. This year, we're celebrating 20 years in business. Our creative team of designers, builders, and furniture experts is dedicated to delivering exceptional service from start to finish.

If you see something you like in our project images, take note and get in touch—we're here to help. We believe in creating intelligent, fun, and dynamic workspaces with a focus on sustainability. Our designs can help you achieve the best work environment for your team, including BREEAM certification for your office space.

To discover more about our services and how we can transform your office space, arrange a visit or visit our website at [www.k2space.co.uk](http://www.k2space.co.uk).

You can also visit us at Studio B, 16 Barnsbury Square, London N1 1JL, or contact us at **+44 (0)20 7697 4670** or [info@k2-space.co.uk](mailto:info@k2-space.co.uk).



# 50 Office Design Ideas

- 01 - Flexible Workplaces
- 02 - Eye-catching Office Entrances
- 03 - Maximise Natural Light
- 04 - Improve Fresh air & Ventilation
- 05 - Optimise Office Space
- 06 - Designing for Workplace Wellbeing
- 07 - Ergonomic Furniture
- 08 - The use of Multiple Colours
- 09 - Artwork in the Workplace
- 10 - Agile, Flexible Working
- 11 - Technology in the Workplace
- 12 - Smart Office Design
- 13 - Home Comforts in the Workplace
- 14 - Biophilic Office Space
- 15 - A focus on Health & Wellness
- 16 - Evidence-based Office Design
- 17 - Relaxing Breakout Areas
- 18 - Unconventional Workspaces
- 19 - Creating Open Spaces
- 20 - Creating Quiet Spaces
- 21 - Reducing Office Partitioning
- 22 - Relax and Unwind Spaces
- 23 - Textures and Finishes
- 24 - Sit-stand Desks
- 25 - Quiet Corners & Focus Spaces
- 26 - Touchdown Spaces
- 27 - Wellness Areas
- 28 - Collaborative Hubs
- 29 - Treehouse Pods
- 30 - Brand-Centric Design
- 31 - Voile Curtains & Netting
- 32 - Campfire Spaces
- 33 - Tree Canopies
- 34 - Soundscaping
- 35 - Wayfinding Systems
- 36 - Bistro-Style Reception Areas
- 37 - Games in the Workplace
- 38 - Modular Office Furniture
- 39 - Sustainable Office Design
- 40 - Inclusive Office Design
- 41 - Pods & Booths
- 42 - Office Libraries
- 43 - Lockers & Personal Storage Solutions
- 44 - Office Gyms & Shower Areas
- 45 - Virtual Collaboration Zones
- 46 - Training & Learning Centres
- 47 - Kitchens & Teapoint Areas
- 48 - Resimercial Design
- 49 - Green Walls & Living Walls
- 50 - Wine and Bar Areas





## Flexible Workspaces

With hybrid working in full swing in 2024, companies now have the creative license to make significant office design improvements. Rishad Tobaccowala, CEO of Publicis, likens the changes in hybrid working to software releases that evolve over time. Offices should not be static; they require constant review and adaptation.

Research supports the benefits of flexible workspaces. According to a 2023 study by McKinsey, 72% of companies reported improved productivity and employee satisfaction when flexible workspaces were implemented. Furthermore, a survey by Gartner found that 82% of company leaders plan to allow employees to work remotely at least part of the time, underscoring the need for adaptable office environments.

When reviewing space plans and layout options, our office design team always recommends including dedicated spaces for concentration, collaboration, and relaxation, alongside traditional workstations. These varied spaces cater to different working styles and needs, fostering a dynamic and productive work environment.







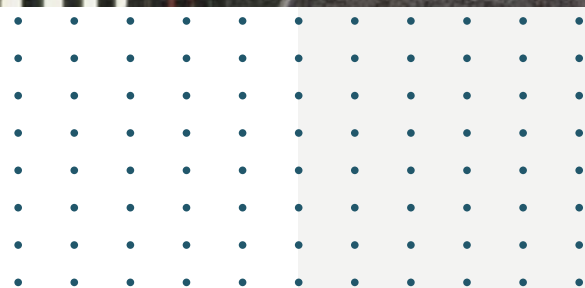




## Eye-Catching Entrances

Studies show you only have 27 seconds to make a good first impression, and 70% of people form their impressions before any communication takes place. Office entrances, including reception areas, lobbies, entryways, and corridors, are crucial in shaping a company's brand perception. Visitors, clients, prospective candidates, and new starters make snap judgments based on their first exposure to your office reception area or lobby. Reception desks should be more than a cosmetic afterthought; they should be design-led centerpieces that express corporate identity.

Our client, Instinctif Partners, exemplifies this with a reception desk that highlights their brand identity immediately upon entering the building. Waiting areas are equally important, as demonstrated in our work for the International Security Forum (ISF). We created an impactful reception and waiting area using bold aluminum cast lettering of the ISF logo against a patterned wood wall, all illuminated with directional spotlights.







20  
MORTLAKE



## Maximise Natural Light

With 80-90% of our days spent indoors, it may not be surprising that natural light is an important factor in planning office spaces. In fact, an HR poll of 1,614 employees, published in the Harvard Business Review, shows access to natural light is the number one attribute workers want in their office environment. Further studies have shown that increasing natural light can have a significant impact on everything from mood to creativity and concentration.

Natural light is an important consideration in office design. Improving natural light can be achieved through effective space planning. For instance, creating open-plan workspaces optimises natural light. Similarly, including glazed partitioning allows light to filter throughout the workplace.











## Improve Fresh Air & Ventilation

The benefits of fresh air are numerous. 20% of the air we breathe is used by the brain, so having fresh air leads to clearer thinking, focus, and concentration. Studies show oxygenated blood boosts brain serotonin, enhancing happiness and well-being and increasing productivity by as much as 8%.

Physiologically, fresh air encourages deep breathing, increasing oxygen intake and expelling toxins. It reduces the survival rate of viruses and bacteria, lowering the risk of headaches, fatigue, allergies, and respiratory illnesses. Improved ventilation is crucial for reducing airborne virus transmission, especially post-COVID-19.

To maximise fresh air, use outdoor spaces like gardens and terraces for work activities and meetings. Advanced ventilation systems and indoor plants can further enhance air quality, creating healthier work environments. In 2024, expect a greater focus on open-air furniture, high quality HVAC and integrating outdoor areas in office design.







## Optimise Office Space

Office space utilisation has become increasingly important. Workplaces often contain “in-between spaces” or “dead spaces” like corridors, under stairs, and other unused areas. A prevalent trend in office design is transforming these unconventional spaces into functional areas such as small huddle booths, informal meeting spaces, or private one-person pods.

As companies embrace more flexible working methods, office design has become more space-efficient. Optimising unused areas can result in new workspaces that enhance staff productivity and agility.

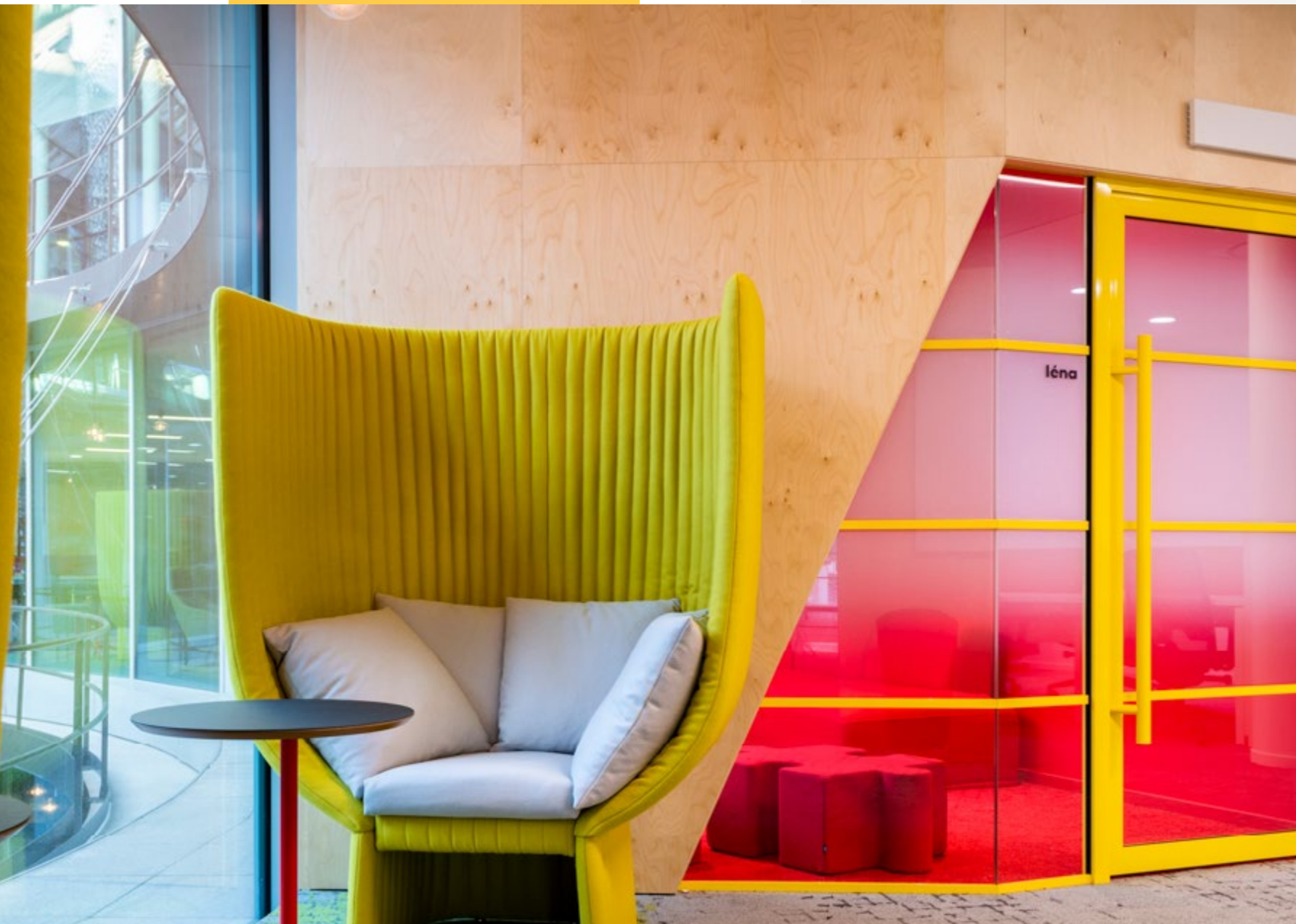
While manually rationalising space is effective, advanced solutions like occupancy monitoring systems offer greater precision. They use sensors to track desk usage and count people at entry points. These scalable and cost-effective sensors provide data on office utilisation, which can integrate with Smart Office technologies like HVAC, lighting control, and meeting room booking systems.











## Workplace Wellbeing

Well-being in the workplace is crucial, especially given growing health concerns such as work-related stress and mental health issues. However, according to the CIPD, only about 50% of UK workplaces have a formal well-being strategy. Implementing a comprehensive well-being program can significantly enhance employee morale and productivity.

As an office design and build company, we focus on creating environments that support employee well-being. This includes designing spaces with ergonomic furniture to reduce physical strain, incorporating natural light to boost mood and energy levels, and creating breakout areas where employees can relax and recharge.

Thoughtfully designed workspaces that promote movement, such as standing desks and collaborative zones, also contribute to a healthier work environment. Investing in a well-designed office can transform employee wellness, leading to a happier and more productive workforce.







## Ergonomic Furniture

With the growing emphasis on health and workplace well-being, ergonomic furniture has become essential in office design. Prolonged sitting has been shown to have detrimental health effects, prompting companies to rethink their office layouts. Incorporating ergonomic solutions can significantly enhance employee comfort and productivity.

Our office design team recommends integrating ergonomic office chairs that support natural movement and good posture. Sit-stand desks allow employees to alternate between sitting and standing, reducing repetitive strain. Additionally, tall tables for standing meetings and breakout areas with diverse seating options promote movement and mitigate the negative impacts of prolonged sitting.

Incorporating ergonomic furniture and creating flexible office spaces can foster a healthier and more dynamic work environment. This approach enhances employee well-being and productivity, making the workplace adaptable to the evolving needs of modern workstyles.











## The Use of Multiple Colours

Colour can make a big impression in office design. While many companies use their brand palette, we recommend considering other tones that subtly denote the purpose of different spaces. For instance, soft colours improve concentration, while vibrant colours enhance collaboration and creativity. You can learn more about this in our dedicated article on [Colour and Office Design](#).

Traditionally, offices have included uniform furniture with chairs of one type and colour. However, using a mix of pantones in office furniture can significantly impact employees' mood and productivity. Different styles, brands, finishes, and fabrics of office chairs can create a fun and engaging work environment.

In several projects, we've used eclectic seating to liven up breakout and tea point areas, making the office space feel less corporate and more welcoming. Creating interiors that are fun, friendly, and relaxing can also be achieved with artwork and other creative elements.







## Artwork in the Workplace

Artwork in the workplace offers numerous benefits, positively impacting mental health and well-being by creating a sense of calm. Additionally, it enhances productivity and creativity, and softens the overall office environment.

Art also plays a crucial role in a company's brand identity, adding unique elements that give an office an authentic feel and a sense of community and belonging. Implementing an art programme allows local and emerging artists to exhibit their work, introducing fresh and inspiring perspectives into the office.

Incorporating artwork into office design not only beautifies the space but also fosters a more engaging and stimulating work environment. This approach can significantly enhance the overall workplace experience, contributing to employee satisfaction and productivity.











## Agile, Flexible Working

With staff spending more time away from their desks and working from home, workplace design must adapt to meet diverse needs. Flexible, agile working strategies include the use of multifunctional spaces, collaborative work areas, and reconfigurable furniture.

Adaptable workspaces allow teams of varying sizes to move freely, create space for walking, jotting down notes, brainstorming with whiteboards, or meeting over coffee. This flexibility supports a dynamic and productive work environment.

Clever furniture choices support these adaptable spaces. For example, chairs and tables that are easily moved and reconfigured, or shelving that forms dividers, can create bespoke areas within an open-plan office. This approach enhances the office's functionality, making it responsive to the evolving needs of modern workstyles.







# Technology in the Workplace

The modern office relies heavily on technology to stay competitive, achieve efficiencies, and boost employee productivity. Investing in technology reduces the time and money needed to complete tasks, allowing workplaces to automate and streamline operations. This enables employees to work effectively outside the office and stay connected with colleagues.

The design implications of technology in the office are numerous. Virtual collaboration tools facilitate team-based work, while space optimisation software supports the reconfiguration of furniture. Touchless technology is becoming increasingly common for desk assignments, room bookings, and door operations, enhancing convenience and reducing physical contact. These advancements not only improve efficiency but also contribute to creating a flexible and adaptive work environment.







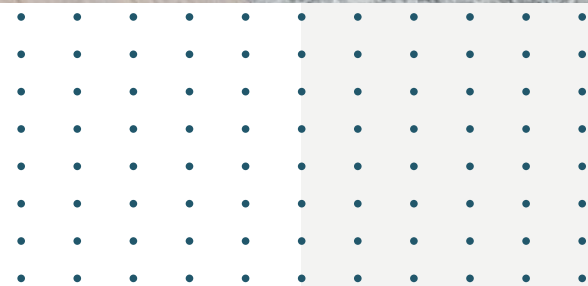




## Smart Office Design

Buildings are increasingly becoming integrated into the digital world, marking a significant shift that will shape the workplaces of the future. The smart office market, currently valued at US\$ 31.35 billion (23.09 billion pounds), is expected to triple by 2030, with a compound annual growth rate (CAGR) of 11%.

A key driver of this growth is advancements in digital sensors that provide data to help companies make informed decisions on energy and cost savings, health and safety, and occupancy. These smart technologies enable more efficient and adaptive workplace environments. We can help you integrate these innovations into your office design, creating a cutting-edge, future-proof workspace.





Odéon





## Home Comforts in the Workplace

As the workplace evolves, elements of home design are becoming more prevalent. Imagine comfortable seating and adjustable lamps, inviting break rooms, cozy tea points, and an increasing number of plants enhancing office spaces (see our article on biophilic office design).

Creating a warm, home-like environment with vibrant sofas, eclectic chairs, and stylish tables not only helps staff and visitors unwind but also stimulates creativity and boosts productivity. By blending the comfort of home with the functionality of the office, employees can feel more relaxed, inspired, and ready to perform at their best.







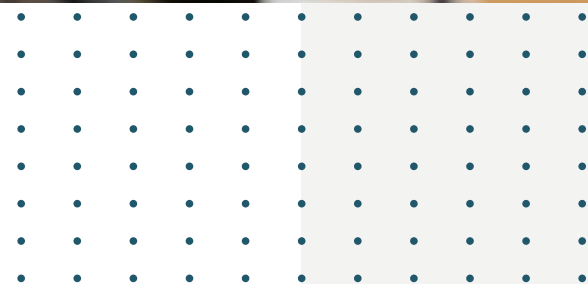




## Biophilic Office Space

Incorporating natural elements into the office can greatly enhance well-being and productivity. Exposure to natural environments can boost cognitive functions, with individuals performing up to 20% better on memory tasks after spending time in nature compared to urban settings. This highlights the powerful impact nature can have on mental abilities and work performance.

Plants in the office improve mood, reduce stress, and offer health benefits. Biophilic design, which includes plant life, living walls, and rooftop gardens, enhances office aesthetics, air quality, and space zoning. We can help you transform your office by integrating biophilic elements, creating a healthier, more productive workspace through the thoughtful use of natural elements.









## Health and Wellness

Workplace well-being is no longer just a trend; it has become the norm, especially post-pandemic. Companies are increasingly embracing wellness programs and promoting them to attract top talent. This shift has made workplace well-being a priority, potentially transforming traditional HR roles to include wellness functions.

Well-being initiatives vary. Larger employers might offer gym facilities and sit-stand desks, while others provide bike storage, showers, and lunchtime running clubs. Encouraging movement through sit-stand desks and standing meetings is a growing trend.

Recognising that workplace stress is a major health issue, companies are creating more relaxed and healthier environments. Our design and fit-out experts can help you implement these ideas, creating a space that enhances well-being and productivity.





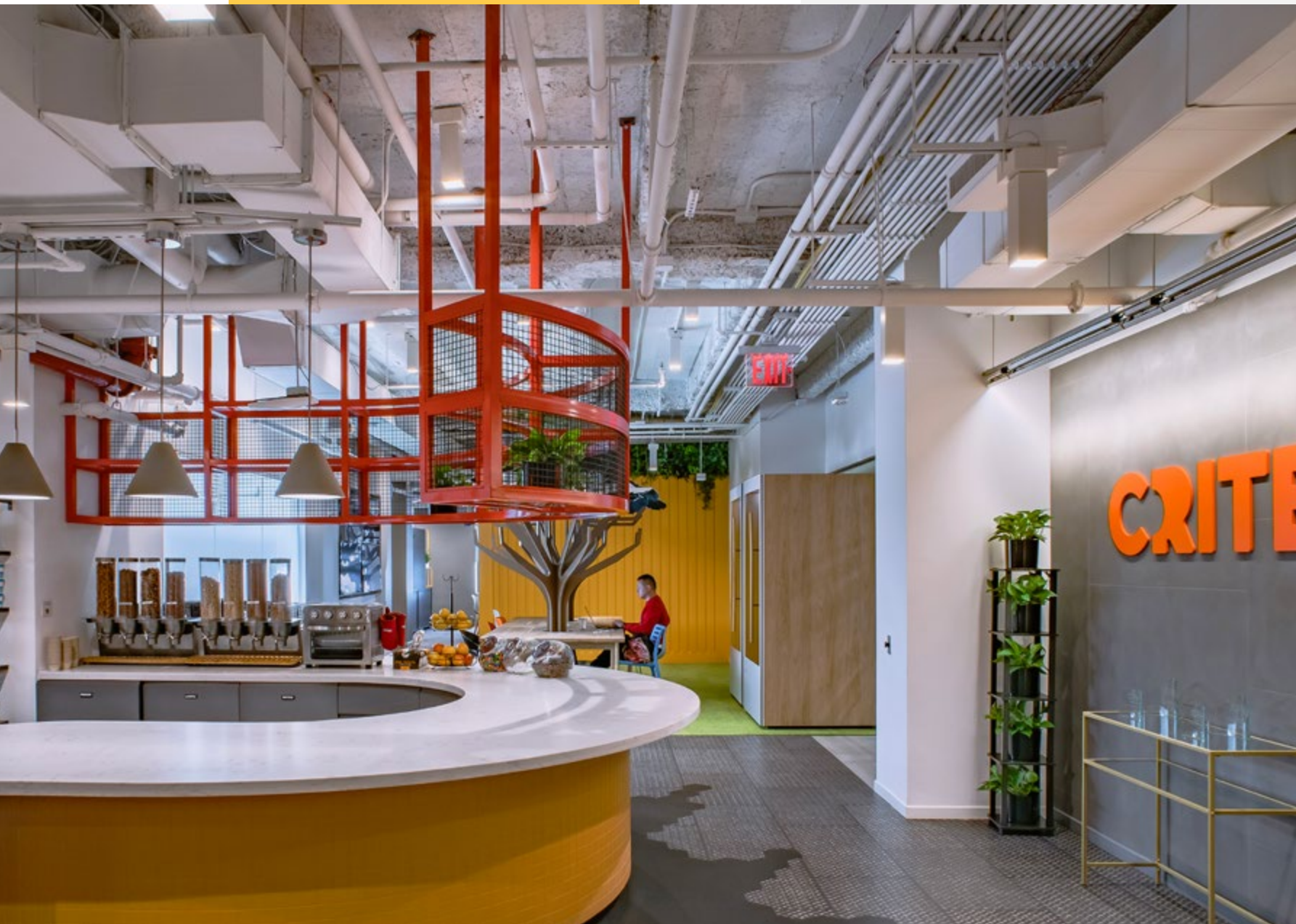


## Evidence-Based Office Design

With the cost of renting office space, many organisations are adopting an evidence-based office design approach. This method helps determine the optimal number of workspaces, the placement of collaborative areas, and the overall space needed, particularly in a hybrid work environment.

According to a study by CBRE, companies that use data-driven design can reduce space requirements by up to 30%. Additionally, a survey by Gensler found that 79% of employees report improved efficiency and satisfaction in data-optimised workspaces. By leveraging this data, companies can optimise their office layouts to better suit the needs of their workforce, ensuring efficient use of space and resources.

Using evidence based design we consolidated Criteo's new york office with four floors into a single 20,000 sq ft floorplate, reducing the workplace size to 35% of its original footprint. This project coincided with Criteo's rebranding, allowing K2 Space to integrate the new corporate identity into the design.







## Relaxing Breakout Areas

A breakout area is a dedicated space where employees can relax, eat, socialise, and hold informal meetings. Modern workplaces focus on staff experience, making the office not just a physical place but a space that enhances well-being and job satisfaction. Companies are investing in attractive work environments to attract and retain top talent, creating spaces where employees love to work.

The design of breakout areas reflects the increasingly blurred lines between work, home, and social life, especially post-pandemic. Companies benefit from making workspaces fun and relaxing, with elements like great coffee, games, and advanced technology to enhance productivity. Today's workplace is about offering a holistic experience, providing comfortable, happy, and healthy spaces that boost creativity and productivity. As working styles become more fluid and agile, designing an experience-centered office is more important than ever.





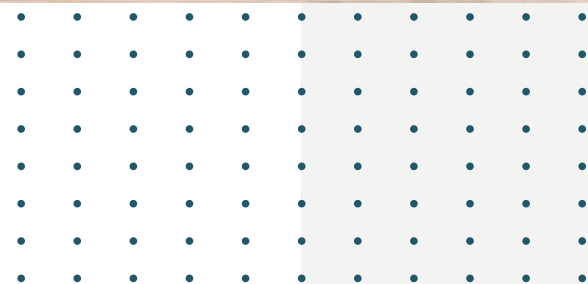




## Unconventional Workspaces

Unconventional workspaces refer to areas not traditionally used for work, such as corridors, nooks, or even spaces under stairs furnished with bean bags or sofas. Driven by technology, this trend enables staff to work from anywhere within the office, with plug-and-play spaces now common in many workplaces.

The concept of the 'Third Space'—areas away from desks and meeting rooms where staff can work—has been a hot topic among office designers. As companies seek space efficiencies and more flexible, agile work practices, these unconventional areas have become increasingly important and popular. By creatively utilising every inch of the office, businesses can foster a more dynamic and adaptable work environment.









## Creating Open Spaces

Open collaborative office spaces are designed for team collaboration, equipped with comfortable seating, whiteboards, and screens for easy idea sharing. These spaces are more than just breakout areas or meeting rooms; they are hubs for creativity and teamwork.

While collaborative zones aren't new, their construction and location within the office are evolving. They serve a dual purpose, offering an alternative space for creativity and discussion. Their open nature encourages collaboration, making them visible and easy to use, which is crucial for their success. This design approach helps foster a dynamic and interactive work environment.





Katherine Johnson

Spirow



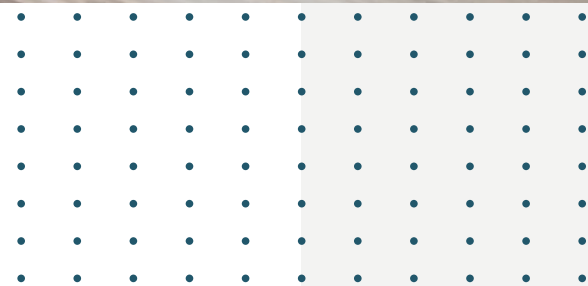


## Creating Quiet Spaces

With all the benefits of open-plan offices, there are also challenges. Studies have shown that over 50% of people have difficulty concentrating in open-plan offices, leading to an estimated 15% decrease in productivity due to lack of focus.

A popular solution for the noise and distractions in open-plan offices is acoustic pods and booths. These provide spaces for one-on-one and team meetings, as well as 'quiet zones' for creativity and relaxation. Unlike traditional cubicles and glass room dividers, small meeting pods and booths don't require planning permission.

Pods come in various shapes and sizes to suit different needs, from two-person meeting pods to hybrid pods with video conferencing capabilities. They offer flexible, noise-reducing spaces that enhance both happiness and productivity, creating a more adaptable and efficient work environment.







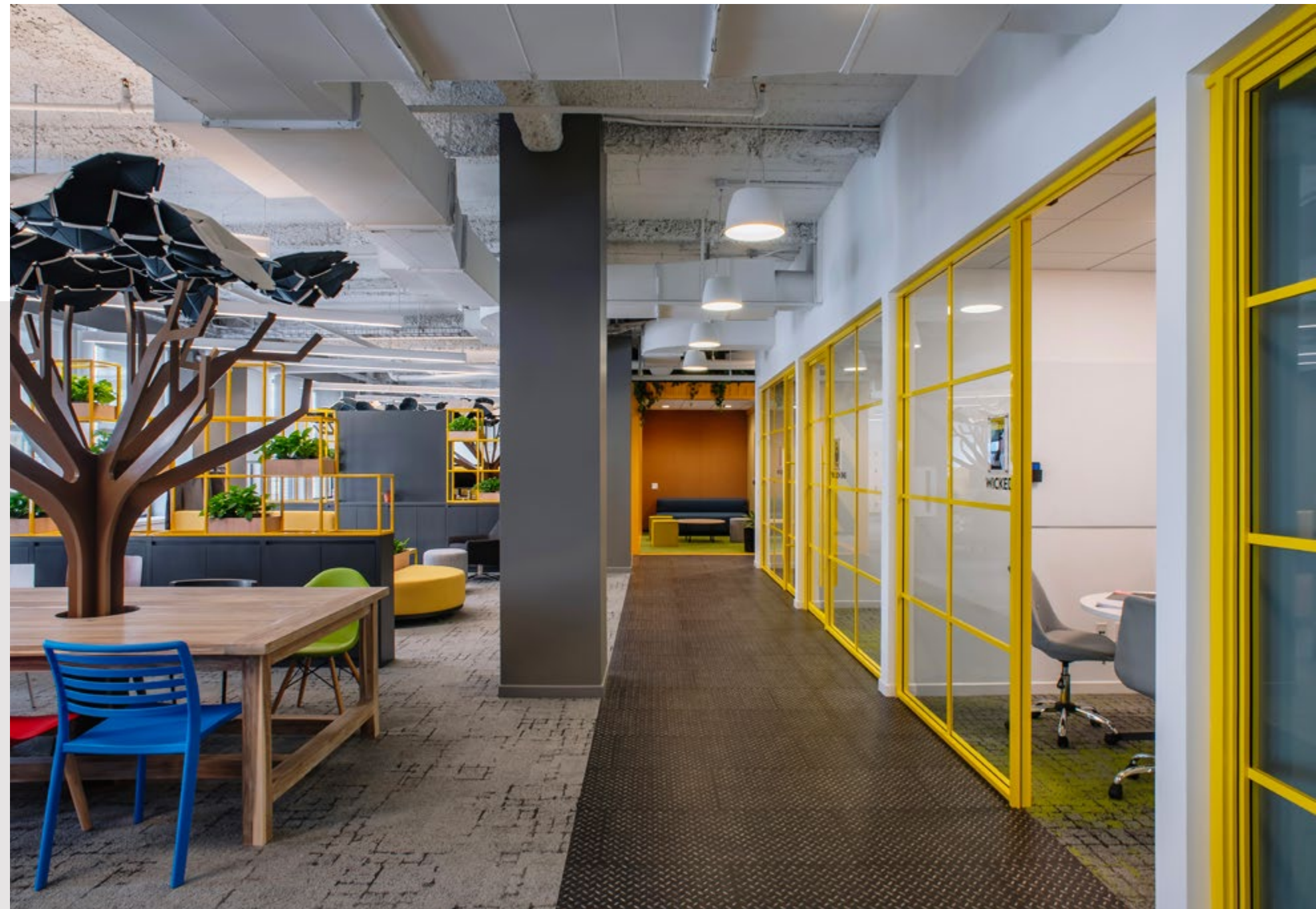


## Reducing Office Partitioning

Human nature dictates that we are drawn to natural textures like wood, stone and metals. It's this simple principle that lies behind Biophilic Office Design by bringing elements of the outdoors into the workplace.

What we have witnessed is more of a variety of natural finishes and textures being used in office design, and some unlikely combinations that conventionally wouldn't have been used or even considered. Wood or wood-inspired flooring has become hugely popular, as have cement surfaces.

The trend for unusual material combinations – metals, wood, textiles and stone – has been growing and we will see even more of this. We are big fans of combining different textures and using subtle variations in natural hues to add depth and interest to interior spaces.











## Relax and Unwind Spaces

Workplaces have always had dedicated spaces for grabbing a quick cuppa or eating lunch. Today, many of these breakout areas resemble residential kitchens or cafes. While we love a great breakout space, we're talking about an entirely separate area designed for staff to unwind, chill out, or even take a nap.

Traditional breakout spaces have served as places for socialising and relaxation, but the idea of a dedicated recharge space is gaining traction. Some companies are including everything from giant bean bags for power naps to meditation spaces with yoga mats and saunas.

These spaces are based on the understanding that tired or mentally drained staff are less productive and creative. A recharge room offers a private, personal space where staff can truly disconnect and recharge, enhancing their overall well-being and performance.



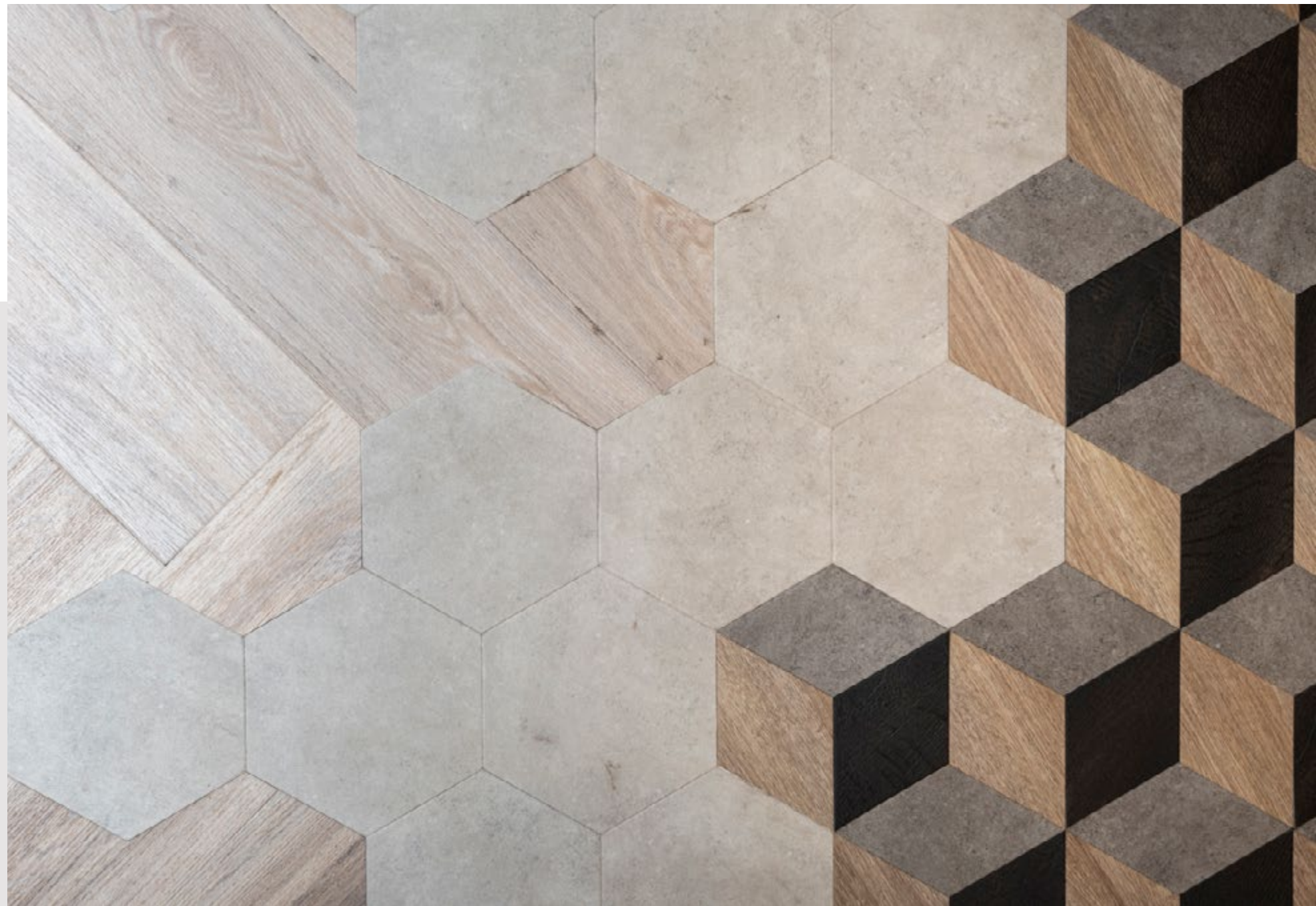




## Textures and Finishes

Human nature dictates that we are drawn to natural textures like wood, stone and metals. It's this simple principle that lies behind Biophilic Office Design by bringing elements of the outdoors into the workplace.

What we have witnessed is more of a variety of natural finishes and textures being used in office design, and some unlikely combinations that conventionally wouldn't have been used or even considered. Wood or wood-inspired flooring has become hugely popular, as have cement surfaces. The trend for unusual material combinations – metals, wood, textiles and stone – has been growing and we will see even more of this. We are big fans of combining different textures and using subtle variations in natural hues to add depth and interest to interior spaces.











## Sit-Stand Desks

One of the primary benefits of using an adjustable standing desk is its positive impact on health. Prolonged sitting can lead to inactive muscles and a slower metabolism, contributing to various health problems. In contrast, standing desks encourage movement and can help improve posture by engaging core muscles and promoting a more upright position. This can help reduce back pain and other musculoskeletal issues.

Proper ergonomics is crucial to maintaining good posture and avoiding muscle strain or related issues. It's important to alternate between sitting and standing, as standing for prolonged periods can be tiring and potentially harmful. In fact, the [British Journal of Sports Medicine](#) recommends breaking up long periods of sitting with two hours of standing or light activity during the workday.







## Quiet Corners & Focus Spaces

Research shows that noise and interruptions can reduce employee productivity by as much as 66%. Quiet focus pods address this issue by being constructed with noise-cancelling materials, providing a haven of tranquillity for tasks requiring deep focus. Inside, users will find comfortable seating and adjustable lighting, creating a customisable workspace that enhances concentration and supports prolonged productivity.

Additionally, these pods are designed to support mental well-being. According to a survey by Future Workplace, 71% of employees reported that noise reduction would improve their workplace experience. By providing a peaceful retreat, Quiet corners and focus pods not only enhance productivity but also contribute to a more satisfying and less stressful work environment.











## Touchdown Spaces

Touchdown Spaces are flexible workspaces designed for brief tasks or impromptu meetings, making them ideal for employees on the go. They provide a convenient, accessible environment for quick work sessions, collaboration, or networking opportunities. These spaces typically feature compact desks or counters with ergonomic seating, ensuring both comfort and practicality. Accessible power outlets and reliable Wi-Fi allow employees to remain connected and productive, whether they need to send a few emails, join a virtual meeting, or complete a quick task.

Touchdown Spaces are particularly advantageous for mobile employees, offering increased flexibility and a reliable spot to work without committing to a full office setup. They facilitate spontaneous collaboration and networking, encouraging a more dynamic and connected work environment. By providing these versatile spaces, companies can enhance productivity and foster a culture that embraces mobility and adaptability.







## Wellness Areas

Wellness Rooms are private spaces for relaxing, rejuvenating and taking a break from workplace stress. Wellness rooms feature calming decor, subdued lighting, and comfortable seating, providing a tranquil retreat for employees.

They often include aromatherapy, meditation tools, or stress-relief activities to further enhance relaxation. By offering a peaceful environment for unwinding, wellness rooms promote mental well-being, reduce burnout, and contribute to a healthier, more supportive work environment.











## Collaborative Hubs

Collaborative hubs are open spaces specifically designed to facilitate group brainstorming and teamwork, encouraging cross-departmental collaboration. These dynamic environments often feature modular furniture, whiteboards, and digital screens, providing versatile setups for various collaborative needs. Informal seating areas are also included to foster spontaneous discussions and idea-sharing.

The benefits of Collaborative Hubs extend beyond simply creating a shared space. They enhance innovation and team cohesion by bringing together individuals from different departments to solve problems and generate new ideas. Furthermore, they facilitate knowledge sharing and networking, creating opportunities for employees to learn from each other and build stronger professional relationships. By offering a flexible and inspiring environment, collaborative hubs empower teams to work more effectively and creatively.



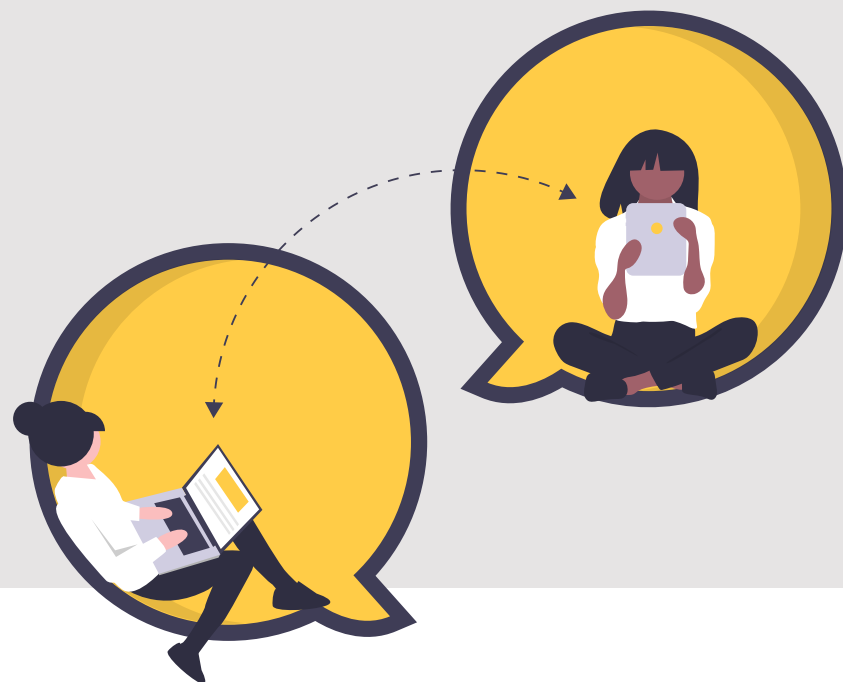




## Treehouse Pods

Treehouse pods, as we call them, are small, enclosed workspaces designed for solitary, relaxed work, offering a unique and elevated feel reminiscent of treehouses. These pods provide a peaceful environment that encourages creativity while promoting a sense of adventure.

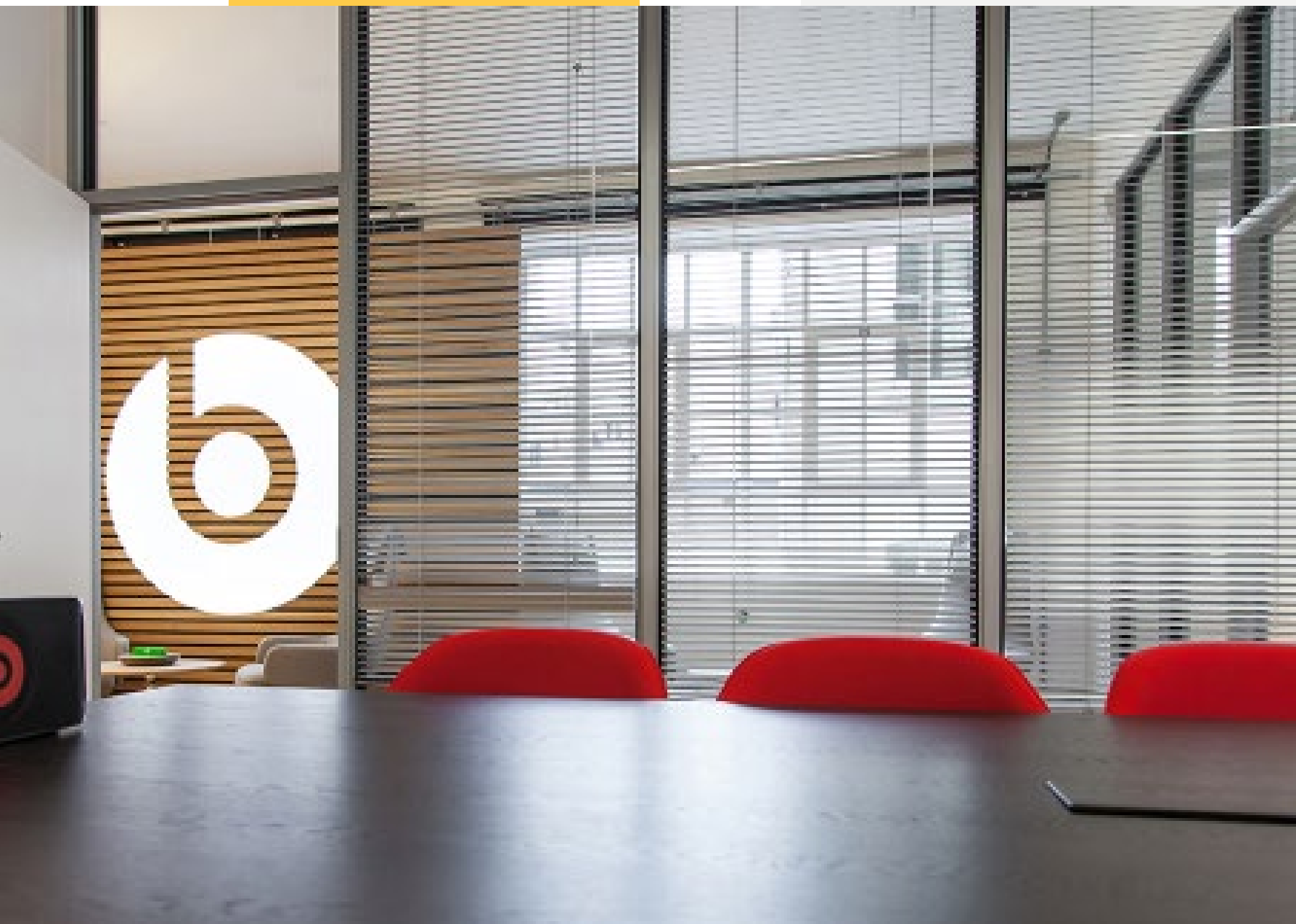
Inside, they feature comfortable seating suitable for laptop use, effective soundproofing, and adjustable lighting to create a personalised, distraction-free atmosphere. By offering a quiet space for focused work, these pods help employees concentrate on their tasks while immersing themselves in a whimsical, inspiring environment. The blend of seclusion and playfulness encourages creativity and adds a refreshing sense of adventure to the workday.







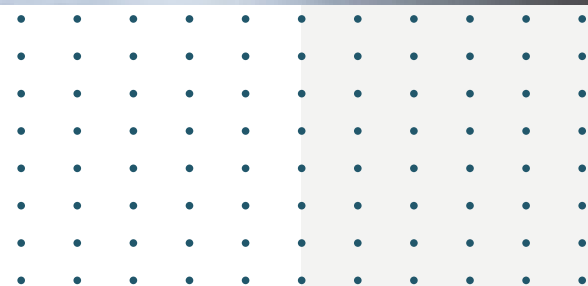




## Brand-Centric Design

Brand-centric design involves prominently displaying branded color schemes, logos, and messaging throughout the office, along with custom furniture and artwork that reflect the brand's unique character. By incorporating these elements into the workspace, companies can enhance employee pride and engagement while creating a consistent and immersive environment for clients.

This design approach not only strengthens the brand's presence but also fosters a unified culture that inspires loyalty and reinforces the company's mission and values, leaving a lasting impression on anyone who steps through the door.









## Voile Curtains & Netting

Voile curtains and netting offer lightweight, translucent options for partitioning office space. They provide subtle separation between different areas without the need for full partitions, helping to maintain an open and connected atmosphere.

These materials soften lighting and enhance the aesthetic appeal of a workspace. Available in various colors and patterns, they can easily match existing decor, adding a versatile design element.

Beyond aesthetics, voile curtains and netting improve office ambience by creating a soft, elegant atmosphere while maintaining a sense of openness. They also add a touch of sophistication and fun, elevating the overall look and feel of the office environment.







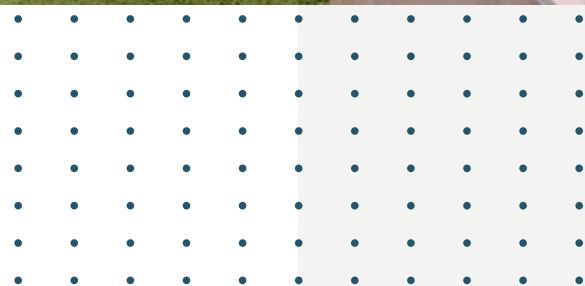




## Campfire Spaces

Campfire spaces is a term we use at K2 Space for innovative, collaborative areas designed to foster communication and teamwork in the workplace. These spaces typically feature circular or semi-circular seating arrangements that encourage face-to-face interaction and inclusive discussions. Equipped with comfortable seating, such as cushioned benches, and enhanced with multimedia capabilities like screens, campfire spaces create a relaxed, open environment ideal for brainstorming sessions, team meetings, and informal gatherings.

By offering a flexible and dynamic setting, campfire spaces help break down hierarchical barriers, making it easier for employees to share ideas and collaborate effectively. This design approach not only enhances productivity but also contributes to a more cohesive and motivated team.









## Tree Canopies

Tree canopies, as we call them at K2 Space, are a blend the natural world with modern workspaces to create an inspiring outdoor-like environment but indoors. These structures mimic tree tops, are placed over communal tables or meeting areas, they foster a feeling of gathering under the shade, promoting community and collaboration.

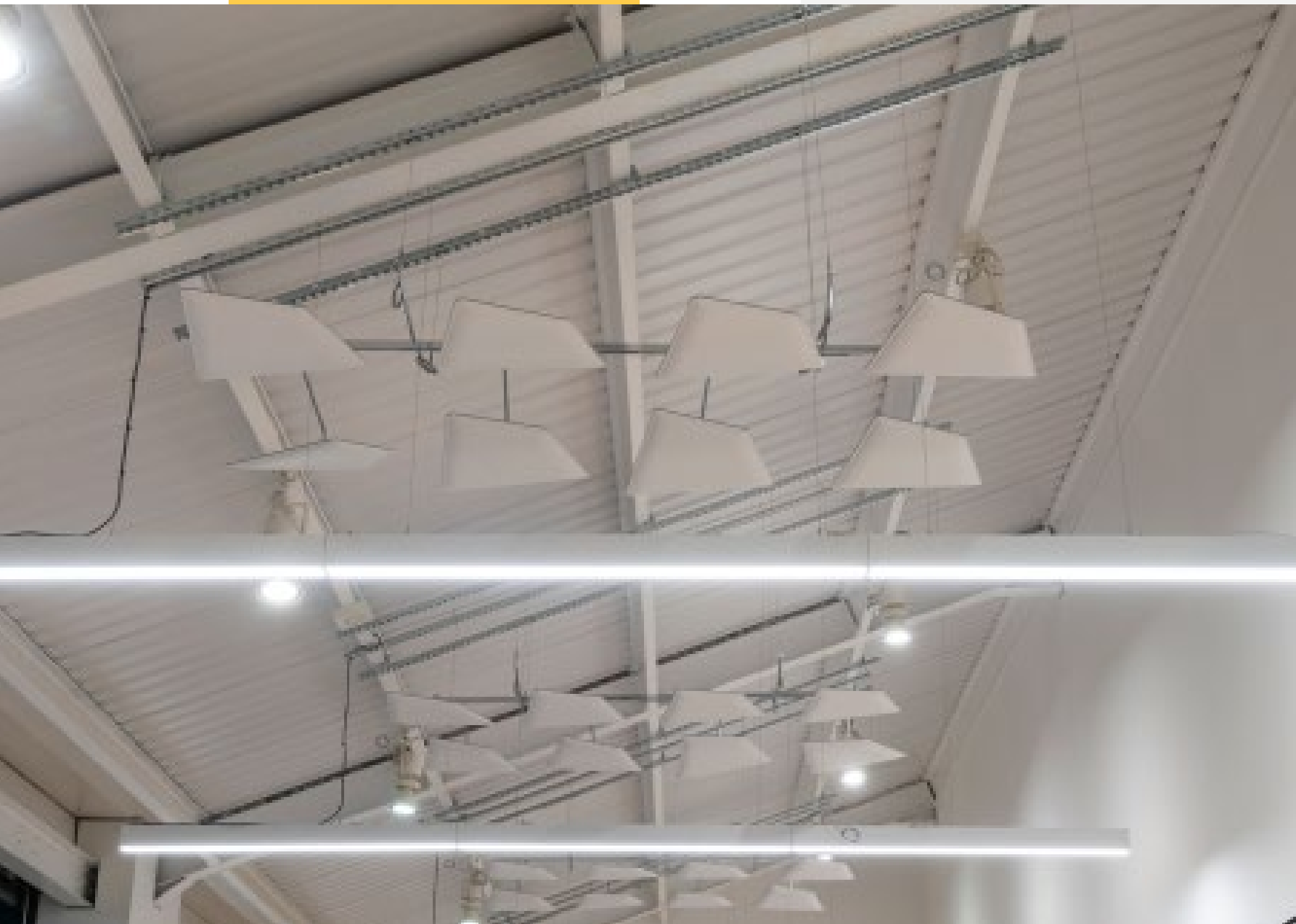
Crafted from various materials, these canopies also enhance office acoustics by dampening noise, creating a quieter and more focused workspace. They define spaces within open-plan offices without the need for traditional walls, enhancing visual appeal, reducing stress, and improving well-being. This innovative approach supports a dynamic and engaging work environment.









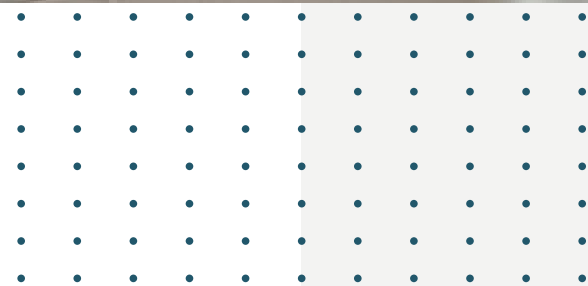


## Soundscaping

Soundscaping is the strategic use of sound to improve office ambiance by masking noise and creating pleasant auditory environments. This concept helps shape the workspace's auditory landscape, making it more conducive to focus and productivity.

Implementation techniques include white noise machines, nature soundscapes, and ambient music, which provide a consistent background sound to cover disruptive noises. Acoustic panels or materials can also absorb excess noise and enhance overall sound quality.

The benefits of soundscaping are significant. It enhances focus and productivity by reducing noise-related distractions, creating a more harmonious and comfortable work environment.



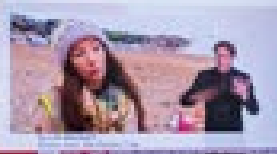




Welcome to No 1 Spinningfields



Love Film of the Year at  
Spinningfields North West Doublemuders  
Reviews 2017





# Wayfinding Systems

Wayfinding systems encompass clear signage and navigation tools designed to help visitors and employees easily navigate large office spaces. These systems play a crucial role in ensuring smooth navigation, improving overall efficiency, and creating a welcoming environment.

Key design elements include colour-coded signage, maps, and digital directories that provide intuitive guidance. Integrating brand identity into these tools ensures a cohesive look that reinforces the company's visual identity.

Wayfinding systems substantial have substantial benefits. They reduce navigation time and confusion, enabling employees to move efficiently throughout the workspace. Additionally, these systems enhance visitor experience and safety by providing clear directions, reducing the stress of navigating unfamiliar surroundings, and fostering a more organised and professional atmosphere.











## Bistro-Style Reception Areas

Bistro-style reception areas can effectively replace the traditional reception desk, offering a more inviting and dynamic first impression for visitors. The image on the left showcases a multi-award-nominated BREEAM certified project of ours, where we designed the entrance of DTRE to resemble a cosy bistro, creating a welcoming and relaxed atmosphere for clients and staff.

These reception areas feature comfortable seating, coffee tables, and lush plants, crafting a cosy and aesthetically pleasing environment. Additionally, offering refreshments such as coffee, tea, or snacks enhances the inviting ambiance, ensuring guests feel cared for and valued.

The benefits of bistro-style reception areas are numerous. They provide a warm and positive first impression of the company and offer clients a comfortable, informal space to wait. This casual yet professional setting helps visitors feel at ease, making them more receptive to business interactions and fostering a positive start to any meeting or collaboration.







## Games in the Workplace

Incorporating games into the workplace encourages creativity and boosts employee engagement. By blending play with productivity, these spaces create a vibrant atmosphere that motivates and inspires staff.

Design examples include game-themed breakout areas equipped with table tennis tables or video games, providing a playful retreat for employees to unwind and socialise. Competition boards displaying productivity challenges introduce a competitive element that promotes teamwork and goal-setting.

The impact on workplace culture is profound. Games in the workplace foster teamwork and creativity, encouraging employees to interact and collaborate in new ways. They help reduce stress, providing a refreshing break from routine tasks, and enhance employee motivation by making work more enjoyable and stimulating. Ultimately, these workspaces contribute to a more dynamic, connected, and productive work environment.











## Modular Office Furniture

Modular office furniture is all about flexibility and adaptability in dynamic workspaces. Designed for quick adjustments, it allows offices to easily meet changing needs and optimise space efficiently.

Some key features include stackable or foldable chairs, movable desks, and partitions that can be reconfigured effortlessly. This means employees can easily rearrange their workspace to fit different tasks or team sizes.

The benefits of modular office furniture are pretty impressive. It enhances office flexibility and space optimisation, making the most of the available space. Plus, it supports various working styles, from individual focus to collaborative teamwork, ensuring the workspace can adapt as organisational needs evolve.







## Sustainable Office Design

At K2 Space, we specialise in sustainable office design, aligning with BREEAM accreditation standards to reduce the carbon footprint of workspaces. Our approach integrates eco-friendly practices, supporting corporate social responsibility goals and appealing to environmentally conscious talent.

Key elements of our sustainable design include the use of recycled or sustainable materials and promoting responsible resource consumption. We incorporate energy-efficient lighting and HVAC systems to minimise energy consumption while maintaining a comfortable and productive work environment.

The impact of sustainable design extends beyond environmental benefits. By achieving BREEAM accreditation, companies demonstrate their commitment to sustainability, enhancing their reputation and corporate social responsibility profile.











## Inclusive Office Design

Inclusive office design focuses on creating workspaces that accommodate the needs of a diverse workforce. It provides features such as accessible restrooms, ramps, braille signage, and adjustable desks to ensure every employee feels comfortable and supported.

Elements include ergonomic furniture, prayer and meditation rooms, and lactation spaces for nursing mothers. These features help create an inclusive environment that embraces diversity and reduces barriers to productivity.

The advantages of inclusive office design are significant. It enhances employee well-being and productivity by ensuring the workplace is accessible and accommodating for everyone. This approach fosters a supportive atmosphere that values diversity and inclusivity, ultimately leading to a more cohesive and efficient workforce.









## Pods & Booths

Phone booths and pods are single-person compact, soundproof spaces designed for private phone calls or virtual meetings. They offer a quiet and secluded environment, providing employees with the privacy needed to communicate without disturbing colleagues or being distracted by surrounding office noise.

Key features include effective soundproofing, ventilation, and comfortable seating, ensuring an optimal environment for focused communication. Some booths also include built-in lighting and power outlets for added convenience.

The advantages of phone booths and pods are significant. They enhance productivity by providing a distraction-free space for important calls and virtual meetings. Additionally, they offer employees a private retreat in open office layouts, supporting both concentration and confidentiality.











## Office Libraries

Office libraries are quiet areas stocked with resources for employee learning and relaxation. They provide a serene environment where employees can read, study, or engage in professional development without distractions.

Key features often include bookshelves filled with relevant literature, comfortable seating, and ample lighting for a pleasant reading experience. Some libraries also offer digital resources and workstations to facilitate focused research.

The advantages of office libraries include promoting continuous learning and offering a tranquil retreat where employees can recharge. They encourage personal and professional growth while fostering a culture of knowledge-sharing within the organisation.







## Lockers & Personal Storage Solutions

Personal storage solutions like lockers provide a secure way for employees to leave their items when working with flexible workstations. They offer a safe and convenient way for staff to store their belongings, ensuring that personal items remain accessible yet secure throughout the workday.

They include individual lockers, cubbies, or lockable cabinets designed to accommodate bags, laptops, and other personal items. Some systems also feature customisable configurations and digital access for enhanced security and flexibility.

The advantages of personal storage are significant. They help maintain a clutter-free workspace, promote organisation, and offer peace of mind to employees who work in hot-desking or activity-based environments. By providing secure and easily accessible storage, these solutions enhance employee satisfaction and support a more organised and efficient office layout.







Let's Fly!

113

114

115

116

117

118

119

120

121

122

123

124

126

127

128





## Office Gyms & Shower Areas

Office Gyms/Fitness Centres are on-site gyms or fitness centres that promote employee wellness. They provide convenient access to exercise facilities, encouraging a healthier lifestyle and work-life balance for staff.

They typically include cardio machines, weight training equipment, and designated spaces for yoga or group fitness classes. Some fitness centers also offer personal training sessions, wellness programs, and locker room facilities.

The advantages of Office Gyms/Fitness Centres are substantial. They support employee health by reducing stress and promoting physical activity, which can lead to increased productivity and reduced absenteeism. Additionally, these amenities enhance job satisfaction and retention by demonstrating the company's commitment to employee well-being.





## Virtual Collaboration Zones

Virtual collaboration zones are spaces optimised for virtual collaboration, equipped with high-quality video conferencing equipment. They provide a seamless environment for remote meetings, enabling employees to connect effectively with colleagues and clients, regardless of location.

Key features include high-definition video conferencing systems, noise-cancelling microphones, and large digital screens for clear communication. Additionally, ergonomic seating, adjustable lighting, and soundproofing ensure a comfortable and distraction-free virtual meeting experience.









## Training & Learning Centres

Access to training in the workplace is fundamental to organisations, from acquiring new skills to ensuring health and well-being within the office space. In fact, according to an IBM survey, 84% of employees at the top performing companies claim have received training.

When designing a new office, it's important to consider howsSpace can be utilised for training purposes. This includes considerations like screen screen sharing, use of whiteboards seating, and lighting. It also includes considerations such as the size of the training space and whether the training area can be used for multiple purposes.

As an example, when fitting out a real estate client's office in Mayfair we used tired seating rather than a conventional lecture theatres. This opened the space allowing it to double as an open area where staff can have lunch and socialise. Similarly, we've designed training rooms that include white boards on wheels and modular furniture so that is easily converted and expanded for different purposes.





## Kitchens & Tea Point Areas

Including kitchens, teapoints and dining areas in your office encourages informal employee interactions. They offer a comfortable space where employees can prepare and enjoy meals together, fostering a sense of community. Additionally, these spaces help enhance employee well-being by encouraging healthy eating habits and offering a welcoming place to relax and recharge.

Key features typically include full-sized appliances, ample counter space, and communal dining tables. Some kitchens are also equipped with coffee machines, snack bars, and beverage stations to provide refreshments throughout the day.









## Resimercial Design

Resimercial Design incorporates residential design elements to create a more comfortable, home-like environment in the workplace. This approach aims to make offices feel warm and inviting, helping employees feel at ease.

It includes plush seating, soft lighting, and textured fabrics reminiscent of home decor. Additional elements like rugs, plants, artwork, and cozy communal areas with coffee tables and lounge furniture contribute to the relaxed ambiance.

By blurring the lines between home and work, it enhances employee comfort, engagement, and productivity, making the office a more appealing place to work.





## Green Walls

Green walls and living walls are indoor plant installations designed to improve air quality and aesthetics in office spaces. These vertical gardens create a refreshing, natural focal point that enhances the overall ambiance of the workplace, transforming ordinary walls into lush, vibrant displays.

Incorporating nature into the workspace through green and living walls offers numerous benefits. They help reduce stress, boost creativity, and provide a more inviting environment for employees and visitors. The presence of greenery has a positive impact on mental well-being, inspiring innovative thinking and making the office feel more welcoming.

Overall, green and living walls are a valuable addition to any office, enhancing both aesthetic appeal and occupant well-being.











## Wine and Bar Areas

Integrating wine and bar areas into office spaces can significantly enhance the workplace environment by providing a designated area for employees to relax and socialise. These spaces foster community and camaraderie, encouraging team bonding and informal networking, which can reduce stress and boost overall morale.

Creating successful wine and bar areas requires thought about design and functionality. Comfortable seating, ambient lighting, and stylish décor create an inviting atmosphere, while a mix of seating options like bar stools and lounge chairs facilitate easy interaction. High-quality fixtures and furnishings ensure durability and long-term appeal.

Beyond improving employee satisfaction, wine and bar areas can enhance client experiences by providing a sophisticated setting for informal meetings. Moreover, it helps to create a hospitable work environment for a company, strengthening its reputation and attracting top talent, in turn, fostering a culture of collaboration and innovation.





# Speak to the office design experts

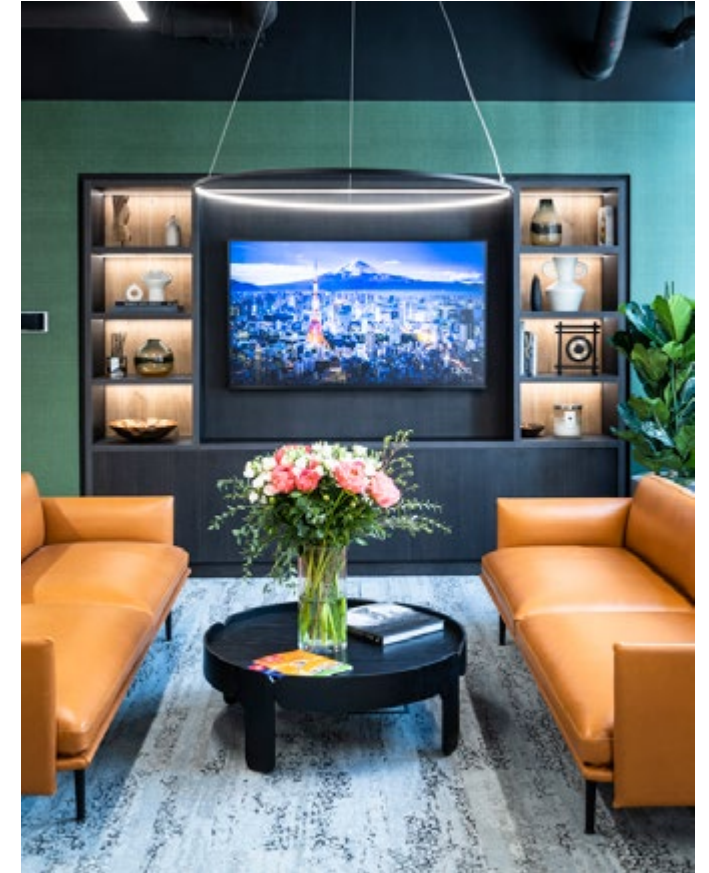
K2 Space is a leading office design and build company in London and also one of the leading independent suppliers of office furniture in the UK. We believe that selecting the right furniture is crucial to the success of any project. Our unique advantage lies in our ability to collaborate with several of the world's top manufacturers, ensuring that we provide the best solutions tailored to each client's needs.

Since 2004, we have been dedicated to creating inspiring workplaces. Our approach involves closely partnering with clients, taking the time to truly understand their workplace requirements, and becoming a trusted partner across multiple projects. This commitment to excellence and personalised service has enabled us to maintain long-standing relationships with clients, some of whom have been with us since day one.

K2 Space Ltd.  
Studio B, 16 Barnsbury Square  
London N1 1JL  
Phone: [+44 \(0\)20 7697 4670](tel:+442076974670)  
Email: [info@k2-space.co.uk](mailto:info@k2-space.co.uk)







Discover more about our services  
and see our completed projects at  
[www.k2space.co.uk](http://www.k2space.co.uk)

## Contact Us:

K2 Space Ltd.  
Studio B, 16 Barnsbury Square  
London N1 1JL  
Phone: [+44 \(0\)20 7697 4670](tel:+442076974670)  
Email: [info@k2-space.co.uk](mailto:info@k2-space.co.uk)



# K2 space